



Sustainable. By Design.

Bleached Aspen Hardwood Kraft

Grade Profile

MPR Aspen Hardwood Kraft pulp has short, flat, uniform, ribbon-like fibres and thin walled, low proportion by weight non-interfering vessel elements. These attributes uniquely qualify the pulp to be used in a wide variety of applications including coated base stock and uncoated papers, tissue, photographic papers, technical and other specialty papers.

Typical Response to PFI Refining and Handsheet Data*

		PFI Revolutions:	0	500	1500	5000
Canadian Standard Freeness	mL		483	406	347	237
Opacity	%		78.9	77.5	76.4	74.0
Bulk	cm ³ /g		1.60	1.55	1.50	1.41
Burst Index	kN/g		1.1	1.7	2.2	3.1
Multi ply Tear Index	mN.m ² /g		4.0	5.4	6.0	7
Single ply tear index	mN.m ² /g		3.0	4.1	4.8	6
Tensile	kNm/kg		26.7	35.6	42.0	53.6
Breaking Length	km		2.73	3.6	4.3	5.5
Stiffness	mNm/kg		5.1	5.8	6.2	7
Internal Bond	J/m ²		111	144	170	233

* Typical Characteristics

Typical Pulp Characteristics

Pulp Sheet Properties

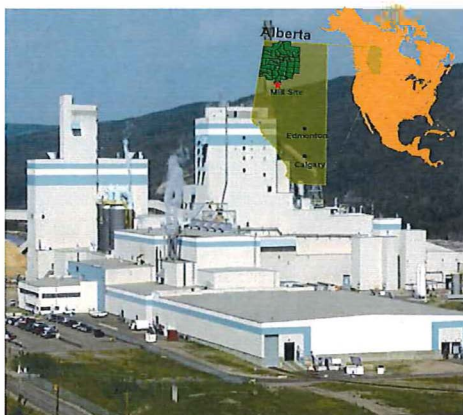
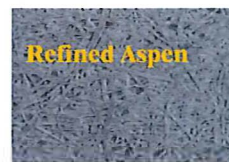
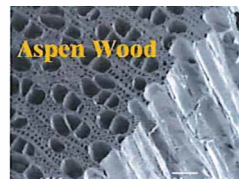
Brightness (ISO)	≥ 88.0%
Dirt Specks (ISO)	≤ 5.0 mm ² /m ² (ppm)
Moisture (Air Dry)	96 ± 2%

Chemical Properties

Ash Content	0.46%
Extractives (Acetone)	0.33%
Viscosity (CED)	≥ 18.0 CPS

Fibre Properties

Species	Aspen
Fibre length	0.75 mm
Fibre width	27.4 µm
Fibres per gram	14 million
Fibre coarseness	0.10 mg/m



Bale Dimensions

Size	
Length	80.2 cm (31.5 in.)
Width	81.3 cm (32 in.)
Height	40.6 cm (16 in.)
Mass	
Weight	263 kg (578 lb.) ± 2.5%

